

the  
**COMPACT** device that is built for  
**PRODUCTIVITY**



# MULTIFUNCTION PERFORMANCE MEETS OUTSTANDING PRODUCTIVITY



Canon's new imageRUNNER 2500 series has incorporated standard features designed to keep your office more productive. From standard network print capability to in-built duplex functionality, this multifunctional device is perfect for any office setting.

Other key features includes a USB port, allowing you to print with, and the option to scan to your thumbdrive directly, as well as long-life components such as E-drum to reduce maintenance and maintain uptime.

The imageRUNNER 2500 series. It's your choice for greater productivity.

## DIFFERENCES and SIMILARITIES

MODEL NUMBER	SPEED	COPY	NETWORK PRINT (UFR II LT)	SCAN	COLOR SEND	FAX	DUPLEX	CASSETTE CONFIGURATION	DADF
iR2520	20	✓	✓	✓	Opt	Opt	✓	250 sheets	Opt (50 sheets)
iR2525	25	✓	✓	✓	Opt	Opt	✓	250/550 sheets	Opt (50 sheets)
iR2530	30	✓	✓	✓	Opt	Opt	✓	250/550 sheets	Opt (50 sheets)
iR2535	35	✓	✓	✓	Opt	Opt	✓	2 x 550 sheets	Opt (100 sheets)
iR2545	45	✓	✓	✓	Opt	Opt	✓	2 x 550 sheets	Opt (100 sheets)

## MULTIFUNCTION PERFORMANCE meets outstanding productivity

### ► Printing

The easy-to-use imageRUNNER 2500 series produces unrivaled image and text quality at speeds of 20 to 45-pages-per-minute.

### ► Copying

Canon's cutting edge image processing technology offers impressive copy features for greater productivity and presentation results. You can also add finishing options for more professional looking documents.

### ► Network Scanning

The imageRUNNER 2500 series is both a black-and-white printer and a color scanner, enabling you to scan documents in both black-and-white and full color.

### ► Color Send

Scan paper documents and send them to one or more recipients directly from the imageRUNNER, making document distribution easy and efficient.

### ► Faxing

Send and receive fax messages with the optional Super G3 Fax technology. This technology enables high-speed fax transmission and reduces waiting time.

### ► Network

Functions such as machine status check, job operations and print instructions can all be monitored and controlled remotely through the network directly from your desktop.



► **Uninterrupted Paper Flow and Hassle-free Paper Loading**

The imageRUNNER 2500 series comes with several standard configurations for paper capacity, so you can be sure there is one for your needs. Additional cassettes may be added to boost total paper reserves to 2,300 sheets, ensuring maximum output efficiency.



With an in-built auto paper sensor, the imageRUNNER 2500 series is intelligent enough to detect paper sizes accurately. This reduces paper jams and misfeeds, translating to higher productivity.



► **Simple-to-use control panel**

The new and intuitive 5.7" QVGA touch screen lets you perform your daily operations such as Copy, Fax\* and Scan jobs. Languages including Thai and Vietnamese are supported to help easy assimilation for all users.

*\* Installation of an optional Fax Board is required.*



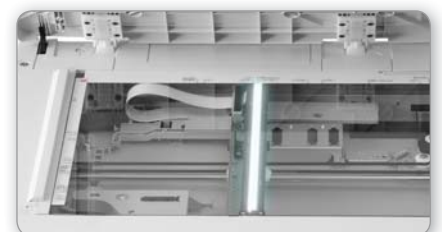
► **Easy maintenance and affordable with low running cost**

Utilizing a separate toner and drum design, each component can be replaced individually, reducing your running costs of maintenance. Furthermore, the new E-drum and toner feature longer durability for higher device uptime.



► **High speed scanning for digitization of paper**

Standard scanning function allows both sides of the hardcopy to be faithfully converted into electronic formats in full color. Together with the fast scanning speeds, you no longer need to spend as much time waiting at the device.



# excellent **PRINT** performance

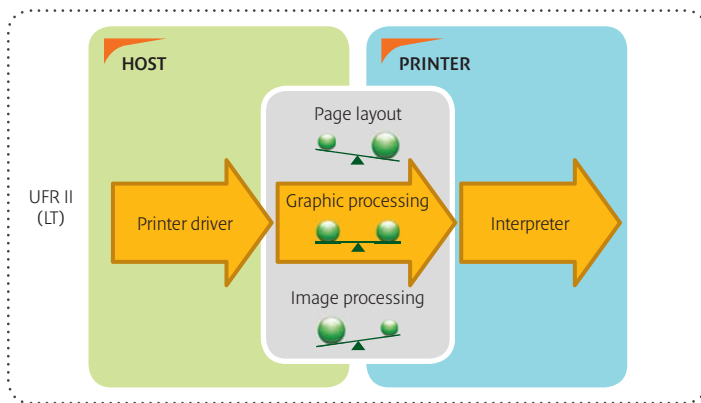
for more professional looking documents



## ► Standard Printing Capability

The new imageRUNNER 2500 series features a standard print capability of 1200 x 1200 dpi with Canon's innovative Ultra Fast Rendering II LT (UFR II LT) printing technology. It is an ideal blend of speed and simplicity for professional looking documents.

This unique printing solution collaborates with the processing power of the sending computer to balance the data load, and augments its own capabilities to facilitate high speed printing. Optional support for PCL5e/6 and PostScript are also available.



## ► Seamless Network Printing

The new imageRUNNER 2500 series can be seamlessly connected to your office network as a shared system. You and your colleagues can now benefit from network printing right out of the box. This not only saves office resources but also simplifies the ease of management.

With support for IPv6, these devices are also ready to meet your future network infrastructure requirements.



Standard network printing capability

## ► Halve your paper consumption with duplex outputs

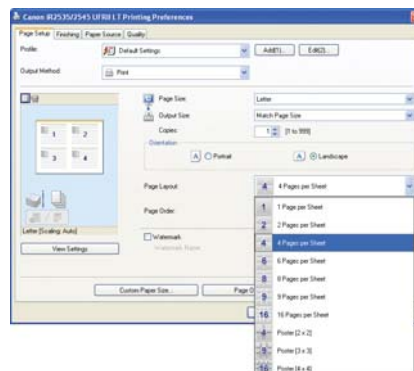
With standard duplex printing mode, you can reduce paper usage by up to 50%. This capability to print on both sides of the paper helps save resources and the environment, making it an essential feature in the office.

## ► Customizable Print Layout for greater efficiency

You can condense multiple originals onto a single copy with this page layout feature. This lets you print from 2 to 16 pages onto a single sheet to dramatically reduce the amount of paper used.



Print two pages on a single piece of paper to save precious resources



## ► Direct USB Memory Printing

With standard USB input, you can walk up to the device and print JPEG and TIFF files with your thumbdrive on the spot.



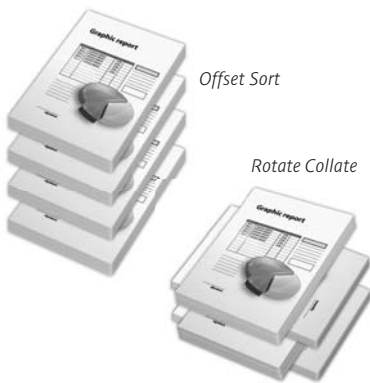


# impressive COPY capabilities

multiply your productivity with imageRUNNER technology

## ► Rotation and Collation of Paper output

The new imageRUNNER 2500 series allows for rotation and collation of paper output, without the need for additional finishing options. This convenient feature eliminates the time consuming, tedious and manual sorting of paper documents, saving you both time and effort for the large volume of documents.



## ► ID Card Copying

With the ID Card Copying function, both sides of the card can be copied on a single side of the paper in its actual size with just a few clicks.

### 01. Scan front of card



### 02. Scan back of card

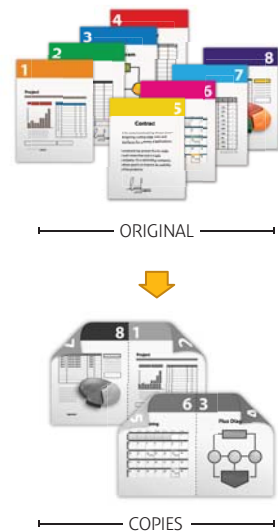


### 03. Print in Portrait or Landscape Orientation



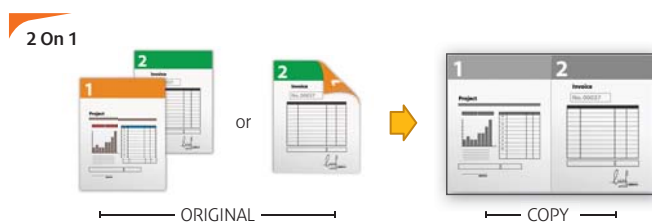
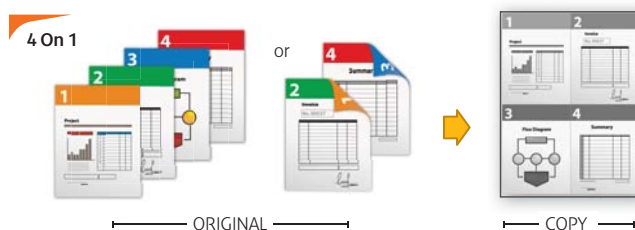
## ► Create booklet copies for easier reading

You can create booklet copies from 1-sided or 2-sided originals, making it easier to read and carry around with convenience.



## ► Save paper and filing space

This feature allows you to automatically reduce and repaginate multiple-page originals and bound originals to fit on a sheet of paper. It significantly reduces the number of pages used and filing space, delivering cost efficiency and is especially convenient for hand-carry of large-volume documents or materials.



## ► Scan-Once-Print-Many

Canon's Scan-Once-Print-Many technology allows you to scan the originals once and print many copies easily by using the images stored in memory, resulting in reduced scanner wear.

You do not need to wait for the current job to be completed before scanning other documents. The device is able to start scanning for a new job even when its print function is busy.

## ► Paper Size Auto Magnification

Enlarge or reduce contents easily to fit paper sizes with only a few clicks. This reduces guesswork automatically, and offers you the ability to select copy magnification from 25% to 400%.

## ► Other useful features

- Erasing Shadows/Book Frame Erase
- 2-Page Separation
- Copying Different Size Originals Together

# SCAN and SEND in full clarity

vivid images at the touch of a button



## STANDARD

- ▶ Add color to your scans with Color Network ScanGear

Using the Color Network ScanGear, you can easily edit or modify scanned images at your own workstation and create crisp, clear, and detailed colored images by utilizing the network in your office. There is no need for standalone scanners or dedicate a PC to a scanner, saving precious time and resources.



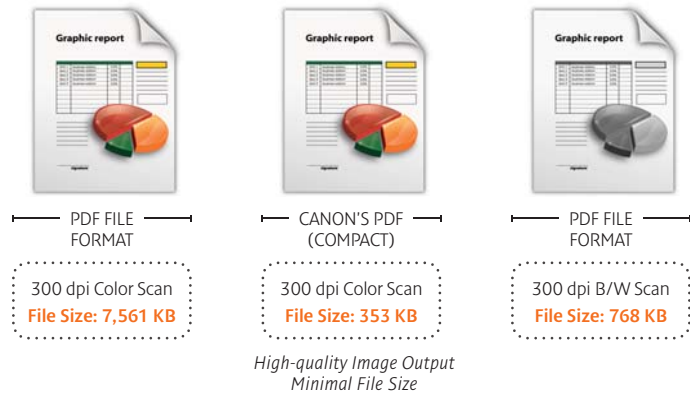
## OPTIONAL

- ▶ Reduce file size to save disk space and bandwidth

Canon's innovative PDF High Compression Mode enables you to compress the file size of color images to approximately 1/10th the size of the original size while maintaining image quality. This allows for meaningful electronic archival of documents at the optimal balance of quality and file size.

### Color Send with High-Compression Mode "PDF (Compact)"

Original: 11" x 17" Hard-copy, Color Graphic with Text



- ▶ Scan and store directly to your USB thumbdrive

The new imageRUNNER 2500 series offers a new level of convenience with optional direct scan to USB memory - an indispensable function for users who are in a hurry or want quick paper conversion to electronic files without the use of a PC. You can convert paper documents to PDF, JPEG or TIFF formats and save them directly into a USB memory media.

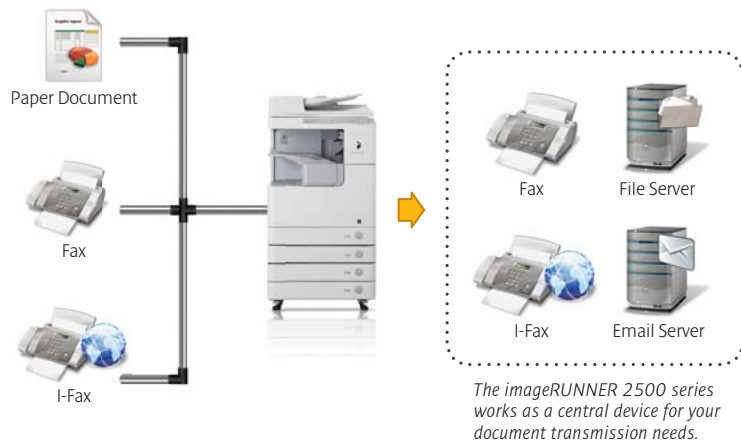
- ▶ Create Searchable PDF automatically

By converting scanned images into text automatically, you can create a Searchable PDF. This reduces the time taken to search for keywords, especially within lengthy documents.

- ▶ Distribute to anywhere with Color Send

Simply scan hardcopy originals and transmit them in PDF, JPEG or TIFF format to email addresses, shared holders, desktop PCs or faxes\* in a single operation. This reduces the cost of hardcopy distribution, saving time, money, and filing space.

\* Installation of optional fax board is required.



- ▶ auSend for better security

Where added security is required, you can activate the auSend feature before using the Color Send feature. Upon user authentication, destination and job settings can be specified. This helps protect confidential documents from unauthorized transmission without locking down the print and copy features of the device. You can even set address restriction that allows sending only to authorized users.



# hassle-free FAX functionality

with high speed document transmission

## ► Super G3 Fax Technology

Send and receive fax messages with the optional Super G3 Fax Technology. The fast speed dramatically reduces your telephone charges and is ideal for sending multiple pages using the one-touch (up to 200 one-touch dials) or group dialing functions.

## ► More fax input possibilities

Compared to standalone fax machines, faxing on multifunctional devices offer much more without requiring additional storage space. You can input from hardbound documents directly and even up to A3-sized documents.

## ► 1000-page Storage Capacity

With the capability to store up to 1000 pages in the memory, you no longer have to worry about losing incoming faxes, even when toner and paper supplies are down.

## ► Fax Forwarding

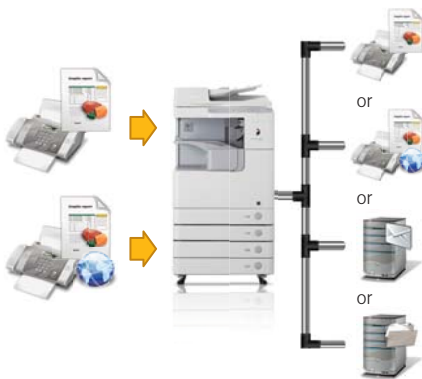
With Fax Forwarding, you will never miss important faxes. Incoming faxes or I-faxes can be configured to automatically route to your desired location.

## ► PC Faxing

You can send faxes over the network. With PC Fax, you can eliminate the need to print out hardcopies for faxing, hence reducing paper wastage.

## ► Reduce paper consumption with Duplex Printing

With standard duplex printing, you can print incoming faxes on both sides of the paper to reduce paper consumption and filing space.



Transmit your faxes directly from your PC through the imageRUNNER 2500 series.



## a better ENVIRONMENT

makes better business sense

Canon designs multifunction devices with the environment in mind, aiming to reduce energy consumption when in use and ensuring ease and comfort of operation.

## ► Energy Conservation

With Canon's RAPID Fusing System™, imageRUNNERS are ready to print instantly, reduce high energy consumption and keep costs at a minimum. imageRUNNERS are certified as international ENERGY STAR® compliant.

## ► Eco-friendly with Green Technology

Other than saving energy, Canon has also successfully developed a unique roller-charging system, which effectively absorbs and disperses the ozone through a filter, making it an ozone-free operation.

## ► Compliance with EU directive on RoHS (Restriction on Hazardous Substance)

At Canon, non-hazardous materials and green technology are used. As such, you can be assured that with Canon products, your business and well-being are taken care of.



# secure device **MANAGEMENT**

for greater control

## ► Manage access with Department ID

By activating the Department ID mode, usage of imageRUNNER 2500 series can be restricted to only users with valid ID & password. You can create up to 1,000 accounts, with restrictions set on copy, print and scan for each individual user. This promotes greater cost awareness among staff and gives you total cost control.

Example:

	Copy	Print	Scan
USER A	100 page limit	50 page limit	100 page limit
USER B	100 page limit	150 page limit	20 page limit

\* Usage of control cards require additional hardware installation.

## ► Remote User Interface and e-Maintenance

The inbuilt Remote UI (Remote User Interface) enables administrators to access machine functions and settings from a web browser on a computer. And with e-Maintenance, administrators can keep track of consumables, device usage and reduce tedious administrative work such as manual meter reading and billing verifications automatically. All these translate to lower downtime and higher productivity.

\* e-Maintenance works with most Canon copiers, printers and multifunction devices. For more information on supported models, please contact Canon.

## ► Device Authentication, usage accountability and secure printing solutions

Paired with uniFLOW solution, you can have greater control and management of the imageRUNNER 2500 series.

### Print Management

Track print activities on the device, and generate reports for easy viewing and analysis.

### Cost Accounting

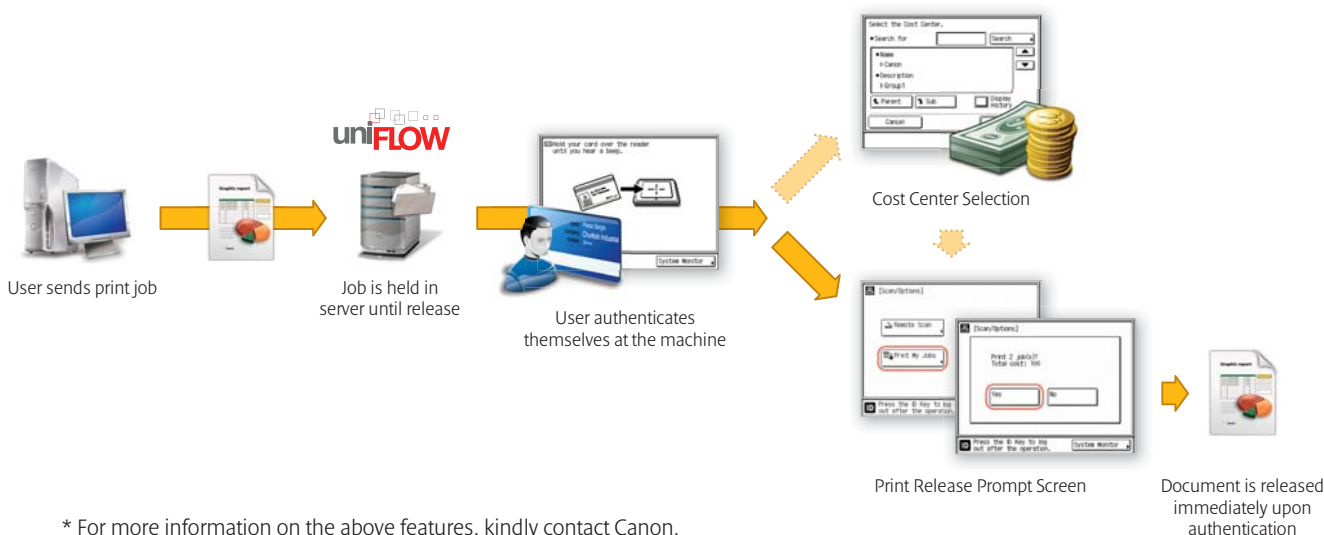
In addition to charging the cost of printing to individuals you can assign the costs to respective departments, eliminating manual accounting procedures.

### Card Authentication

You can control access and prevent unauthorized users from using the device. Only users with a valid ID can access the device.

### Secure Print and My-Print-Anywhere

This unique feature requires users to be physically present at the device to collect their output from any uniFLOW enabled device in the organization, for security and user convenience.



\* For more information on the above features, kindly contact Canon.

# imageRUNNER 2500 series CONFIGURATIONS



iR2520



iR2525/2530



iR2535/2545

## ADF, Tray and Finisher Options



▶ DADF-AB1



▶ DADF-AA1

## Paper Cassette Options



▶ Cassette Module-W1



▶ Cassette Spacer-A1



▶ Cassette Feeding Module-AE1

## Finisher/Output Tray



▶ Inner 2 Way Tray-G1



▶ Inner Finisher-B1 with Additional Inner Finisher Tray-B1

## Additional Upgrades Options



▶ Card Reader-E1 with Card Reader Attachment-D3



▶ USB Application 3-Port Interface Kit-A1



▶ System Upgrade RAM-C1

# SPECIFICATIONS - imageRUNNER 2500 series

Device	imageRUNNER 2520/2525/2530/2535/2545	
Type	Desktop (Reader Combined + Inner Output)	
Imaging System	Laser Dry Electrostatic Transfer System	
Memory	Standard: 256MB Maximum: 512MB	
Network Interface	Ethernet (100Base-TX/10Base-T), USB 2.0	
Warm Up Time	30 seconds maximum after powering ON 1 seconds maximum from the Sleep mode	
First Copy Output Time	imageRUNNER 2520: 6.4 seconds or less imageRUNNER 2530/2525: 5.4 seconds or less imageRUNNER 2545/2535: 3.9 seconds or less	
Multiple Copies	1 to 999 sheets	
Magnification	25% to 400% (1% increment)	
Maximum Original Size	Max. A3/11"x17"	
Duplex	Standard	
Copy/Print Speed	imageRUNNER 2520: 20ppm imageRUNNER 2525: 25ppm imageRUNNER 2530: 30ppm imageRUNNER 2535: 35ppm imageRUNNER 2545: 45ppm	
Resolution	Reading: 600 x 600 dpi Writing: 1200 x 1200 dpi	
Paper Sources (A4, 80gsm)	imageRUNNER 2520: Standard: 250 sheets paper capacity Maximum: 250 + 3 x 550 sheets paper capacity imageRUNNER 2520/2525: Standard: 250 + 550 sheets paper capacity Maximum: 250 + 3 x 550 sheets paper capacity imageRUNNER 2545/2535: Standard: 2 x 550 sheets paper capacity Maximum: 4 x 550 sheets paper capacity	Standard: 100 sheets Stack Bypass  Standard: 100 sheets Stack Bypass
Acceptable Paper Weights	Paper Cassette: 64 to 90gsm Stack Bypass: 64 to 128gsm	
Main Unit Dimensions (W x D x H)	imageRUNNER 2520: 565 mm x 680 mm x 681 mm (with the platen cover) 565 mm x 693 mm x 771 mm (with the feeder) imageRUNNER 2525/2530: 565 mm x 680 mm x 806 mm (with the platen cover) 565 mm x 693 mm x 896 mm (with the feeder) imageRUNNER 2535/2545: 565 mm x 680 mm x 806 mm (with the platen cover) 565 mm x 693 mm x 907 mm (with the feeder)	
Weight	imageRUNNER 2520: Approx. 50.5 kg imageRUNNER 2525/2530: Approx. 67.7 kg imageRUNNER 2535/2545: Approx. 69.5 kg	
Power Source	imageRUNNER 2520/2525/2530: 220 - 240 V AC, 50/60 Hz imageRUNNER 2535/2545: 220 - 240 V AC, 50/60 Hz	
Maximum Power Consumption	imageRUNNER 2520/2525/2530: Approx. 1.542kW imageRUNNER 2535/2545: Approx. 1.827 kW	
Toner Yield (6% Coverage)	imageRUNNER 2520/2525/2530: Approx. 14,600 sheets (A4) imageRUNNER 2535/2545: Approx. 19,400 sheets (A4)	
Drum Yield	imageRUNNER 2520/2525/2530: Approx. 132,000 sheets (A4) imageRUNNER 2535/2545: Approx. 140,000 sheets (A4)	
<b>Print Specification</b>		
PDL	Standard: UFR II LT Optional: PCL 5e/6, PS3	
Network OS	Windows 2000/XP/Server2003/Vista/Server2008/Win7/Linux, Mac OSX (10.4.9 or later)	
<b>Network ScanGear Specification</b>		
Supported OS	Windows 2000/XP/Server 2003/Vista/Server 2008/Win7	
Resolution	BW: Up to 600 x 600 dpi CL: Up to 300 x 300 dpi	
<b>Optional Accessories</b>		
<b>DADF-AA1 (Only for iR2535/2545)</b>		
<b>DADF-AB1 (Only for iR2520/2525/2530)</b>		
Power Source	From Main Unit	
Stacking Method	Face Down	
Feeder Capacity (80gsm)	DADF-AA1: 100 sheets DADF-AB1: 50 sheets	
Acceptable Originals	A4, A4R, A3, A5, A5R, B4, B5, B5R	
Acceptable Paper Weights	DADF-AA1: 1-sided: 42 to 128gsm 2-sided: 50 to 128gsm DADF-AB1: 52 to 128gsm	

Speed	DADF-AA1: Copying: 45ipm (B&W) Sending: 45/34ipm (B&W/Color) DADF-AB1: Copying: 25ipm (B&W) Sending: 25/25ipm (B&W/Color)	
Dimensions (W x D x H)	DADF-AA1: 565 x 540 x 137 mm DADF-AB1: 565 x 544 x 126 mm	
Weight	DADF-AA1: Approx. 7.9kg DADF-AB1: Approx. 7.0kg	
<b>Inner 2Way Tray-G1</b>		
Power Source	Power Supply Unit-U1 (Optional Accessory)	
Stacking Method	Face Down	
Paper Weight	64 to 128gsm	
Capacity (80gsm)	Tray A: A4/B5: 250 sheets Other sizes: 100 sheets  Tray B: A4/B5: 100 sheets Other sizes: 50 sheets	
Dimensions (W x D x H)	426mm x 413mm x 109mm	
Weight	Approx. 0.6kg	
<b>Cassette Module-W1 (Only for iR2520)</b>		
Paper Sizes	A4, A4R, A3, A5R, B4, B5, B5R	
Paper Capacity (80gsm)	550 sheets	
Power Source	From Main Unit	
Power Consumption	Approx. 17.4 W Max	
Dimensions (W x D x H)	565mm x 680mm x 97mm	
Weight	Approx. 12.8kg	
<i>Note: Installation of Cassette Spacer-A1 is required.</i>		
<b>Cassette Module-AE1 (for all models)</b>		
Paper Sizes	A4, A4R, A3, A5R, B4, B5, B5R	
Paper Capacity (80gsm)	2 x 550 sheets	
Power Source	Power Supply Unit-U1 (Optional Accessory)	
Power Consumption	Approx. 13.3 W Max	
Dimensions (W x D x H)	565mm x 680mm x 248mm	
Weight	Approx. 2.4kg	
<i>Note: For iR2520, installation of Cassette Spacer-A1 is required.</i>		
<b>Super G3 Fax Board-AG1 (for all models)</b>		
Applicable Line	Public Switched Telephone Network (PSTN), 1 line	
Compression Method	MH, MR, MMR, JBIG	
Transmission Time	ECM-MMR: Approx. 3.2 seconds G3MR method: Approx. 13 seconds G3MH method: Approx. 13 seconds JBIG: Approx. 2.6 seconds	
Transmission Type	Super G3, G3	
Sending Original Sizes	A3, A4, A4R, B5*1, B5R*2, A5*2, A5R*1 *1 - Sent as B4 *2 - Sent as A4	
Receiving Paper Sizes	A3, B4, A4, A4R, B5, B5R, A5, A5R	
Auto Dial Function	Address Book: 300 destinations; one-touch buttons: 200 destinations	
Image Memory	Approx. 1,000 pages	
<b>Color Send Kit-Y1 (for all models)</b>		
Sending Method	Email, I-Fax, File-Server (FTP, SMB)	
File Format	TIFF (B&W), PDF (B&W/Color), PDF (OCR*) (B&W/Color), JPEG (Color), PDF (Compact) (Color), PDF (Compact + OCR*) (Color)  *OCR functions require installation of Color Send Searchable PDF Kit-C1	
Color Mode	Color, B&W	
<i>Note: Installation of System Upgrade RAM-C1 is required.</i>		
<b>Other Accessories and Supplies</b>		
FL Cassette-AJ, FL Cassette-AL1, FL Cassette-AK1, Envelope Feeder Attachment-D1, Cassette Spacer-A1, Inner Finisher-B1, Inner Finisher Additional Tray-B1, Stamp Ink Cartridge-C1, Stamp Unit-B1, Staple-J1, 2 Way Unit-B1, Document Tray-J1, Card Reader-E1, Card Reader Attachment-D3, USB Application 3-Port Interface Kit-A1, Serial Interface Kit-J2, Control I/F Cable-A1, ADF Access Handle-A1, Power Supply Unit-U1, PCL Printer Kit-AF1, PS Printer Kit-AF1, Barcode Printing Kit-B1, Color Send Searchable PDF Kit-C1, System Upgrade RAM-C1, NPG-51 Black Toner, NPG-50 Black Toner, NPG-50/51 Drum Unit, CST Heater Unit-37, Heater Kit-J1, IR Pedestal Type K		

For more queries and product demonstrations, please speak with one of our Canon representatives today.





# Canon

Delighting You Always

## SOUTH & SOUTHEAST ASIA REGIONAL HEADQUARTERS

Canon Singapore Pte. Ltd.  
1 HarbourFront Avenue #04-01, Keppel Bay Tower, Singapore 098632  
Tel: +65-6799 8888 | Fax: +65-6799 8882

[www.canon-asia.com](http://www.canon-asia.com)  
[www.canon.com.sg](http://www.canon.com.sg)

## CANON SALES SUBSIDIARIES & BUSINESS PARTNERS

### Afghanistan:

Megaplus Afghanistan Limited  
House No. 233, Street No. 4, Charagh Ali,  
Qilla-e-Fatehullah, Kabul, Afghanistan  
Tel: 93-700 228 832 / 93-700 979 511  
Fax: 93-202 201 259  
Email: [info@megaplus.com.af](mailto:info@megaplus.com.af)

### Bangladesh:

Flora Limited  
Adamjee Court Annex-2 (4<sup>th</sup> Floor)  
119-120 Motijheel Commercial Area  
Dhaka 1000 Bangladesh  
Tel: 880-2-716-2742-46 / 225  
Fax: 880-2-955-0030  
[www.floralimited.com](http://www.floralimited.com)

### Brunei:

Interhouse Company  
No. 5-7 Bunut Jaya Complex  
Spq 574 Jalan Tutong BF1320  
P.O. Box 423, Seri Complex  
Bandar Seri Begawan BA 1779  
Brunei Darussalam  
Tel: 673-2-653-001  
Fax: 673-2-653-003

### Cambodia:

Royal Cambodia Co., Ltd  
#437 Preah Monivong Blvd  
Phnom Penh  
Kingdom of Cambodia  
Tel: 855-23-428955  
Fax: 855-23-722961

### Hong Kong:

Canon Hongkong Co. Ltd  
19F, The Metropolis Tower  
10 Metropolis Drive  
Hunghom, Hong Kong  
Tel: 852-3191-2388  
Fax: 852-2369-3800  
[www.canon.com.hk](http://www.canon.com.hk)

### India:

Canon India Private Limited  
2<sup>nd</sup> Floor, Tower A & B  
Cyber Greens, DLF Phase III  
Gurgaon - 122002  
Haryana, India  
Tel: 91-124-416 0000  
Fax: 91-124-416 0011  
[www.canon.co.in](http://www.canon.co.in)

### Indonesia:

PT Samafitro  
Jalan Ir. H Juanda No.8  
Jakarta 10120, Indonesia  
Tel: 62-21-345 8989  
Fax: 62-21-345 6699  
[www.samafitro.co.id](http://www.samafitro.co.id)

### Malaysia:

Canon Marketing (Malaysia) Sdn Bhd  
Block D, Peremba Square  
Saujana Resort Section U2,  
40150 Shah Alam  
Selangor Darul Ehsan, Malaysia  
Tel: 60-3-7844 6000 / 7845 0055  
Fax: 60-3-7844 6196 / 6198  
[www.canon.com.my](http://www.canon.com.my)

### Maldives:

Simdi Company Pvt Ltd.  
G. Manaam Building,  
2/1 Neeloafaru Magu,  
Male' 20-129, Maldives  
Tel: 960-333 4421  
Fax: 960-333 4424

### Myanmar:

Myanmar Golden Rock International Co., Ltd  
Level 6, FJV Commercial Centre  
No: 422-426, Strand Road  
Botataung Township  
Yangon, Myanmar  
Tel: 95-1-202092 to 96  
Fax: 95-1-202079  
Email: [sales@mgr.com.mm](mailto:sales@mgr.com.mm)

### Nepal:

International Electronics Concern (P) Ltd  
Kha 14, 1<sup>st</sup> Floor  
Haratibhawan Putalisadak  
Ramshah Path, Kathmandu, Nepal  
P.O. Box 12588  
Tel: 977-1-442 1991  
Fax: 977-1-442 1909

### Pakistan:

Shirazi Trading Company (Pvt.) Ltd  
8<sup>th</sup> Floor, Adamjee House  
I.I. Chundrigar Road  
Karachi 74000 Pakistan  
Tel: 92-21-3241 (7659), (7737) or (7746)  
Fax: 92-21-(3241 7747), (3242 0417) or  
(3242 0418)  
[www.shirazitradng.com.pk](http://www.shirazitradng.com.pk)

### Philippines:

Canon Marketing (Philippines), Inc.  
Ground Floor Commerce and Industry Plaza.  
Campus Ave. Cor. Park Ave., McKinley Hill  
Fort Bonifacio, Taguig City  
Tel: 632-884-9000  
Fax: 632-894-4174  
[www.canon.com.ph](http://www.canon.com.ph)

### Sri Lanka:

Metropolitan Office (Pvt) Ltd  
12, Magazine Road Colombo 08  
Sri Lanka  
Tel: 94-11-470 0200  
Fax: 94-11-470 0267

### Thailand:

Canon Marketing (Thailand) Co. Ltd  
10<sup>th</sup> Floor Bangkok City Tower  
179/34-45 South Sathorn Road  
Bangkok 10120  
Tel: 66-2-344 9999  
Fax: 66-2-344 9960  
[www.canon.co.th](http://www.canon.co.th)

### Vietnam:

Canon Singapore Pte Ltd  
Ho Chi Minh City Representative Office  
Floor 6, Saigon Centre Building  
65 Le Loi, Ben Nghe Ward, District 1  
Ho Chi Minh City, Vietnam  
Tel: 848-3820 0466  
Fax: 848-3820 0477  
[www.canon.com.vn](http://www.canon.com.vn)

### Hanoi City Representative Office:

15 Nguyen Chi Thanh, Ba Dinh  
Hanoi, Vietnam  
Tel: 844-3771 1677  
Fax: 844-3771 1678  
[www.canon.com.vn](http://www.canon.com.vn)